



2012

2013 4 24



	1
	2
	3
1	3
2	3
3	4
	4
1	4
2	5
	5
1	5
2	6
3	6
	7
1	7
2	8
3	9
4	9
5	10
	10
1	11
2	11
3	12
4	13
5	13
6	14
	16

1	16
2	17
	19
1	19
2	19
3	20
4	20
	21
1	21
2	21
3	21
4	24
5	24
	25
1	25
2	26
3	26
4	26
5	26

2012

2013

"

"

2013

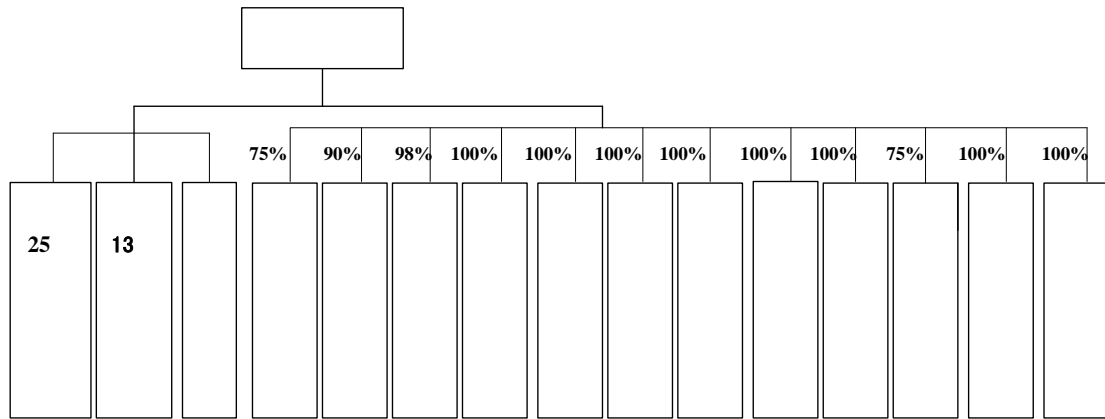
"

" "

"

2013

2013 4 24



3

25%

353

1

1/3

2007 2

2015

60

353

4

34

" "

2

"

"

"

"

3

2012

2012

"

"

1

353

6.7%

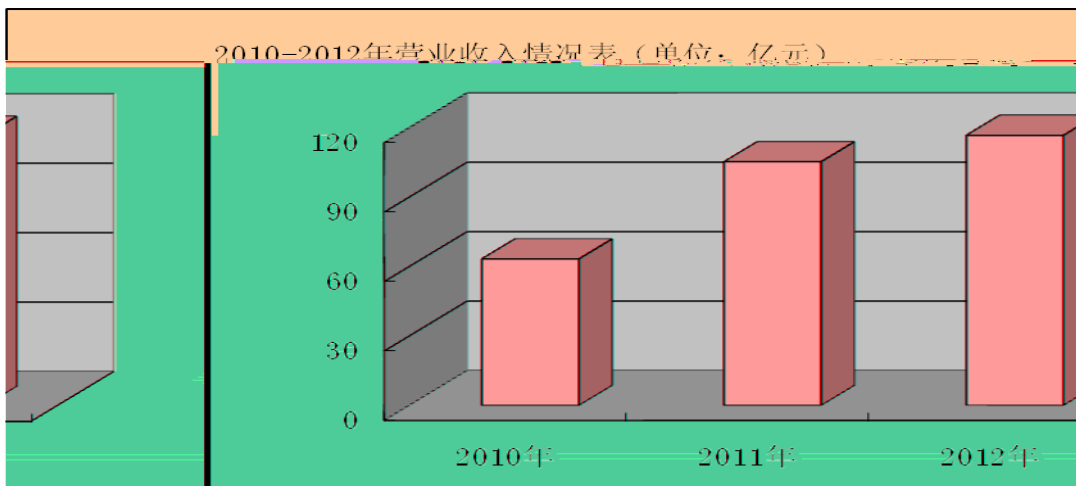
20 80

" "

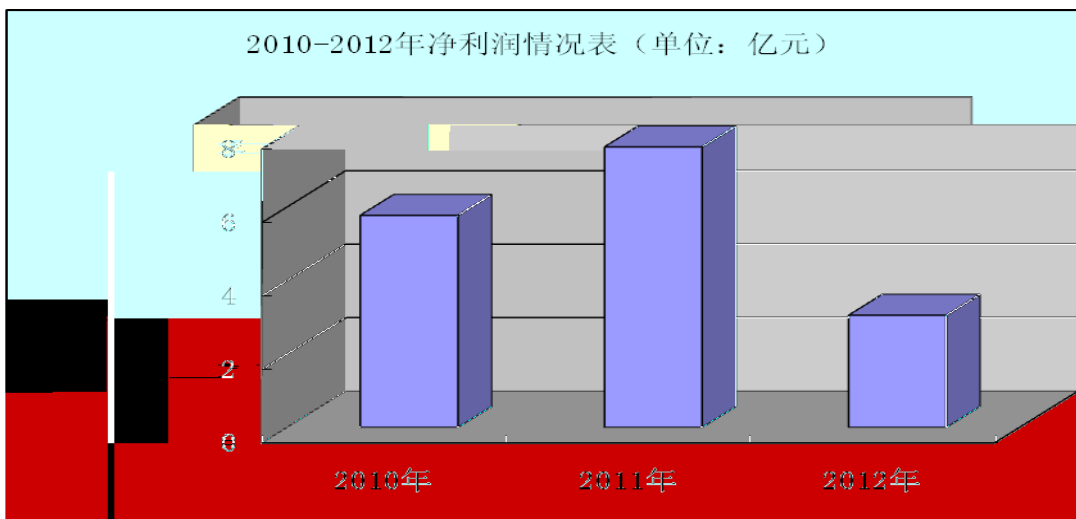


1

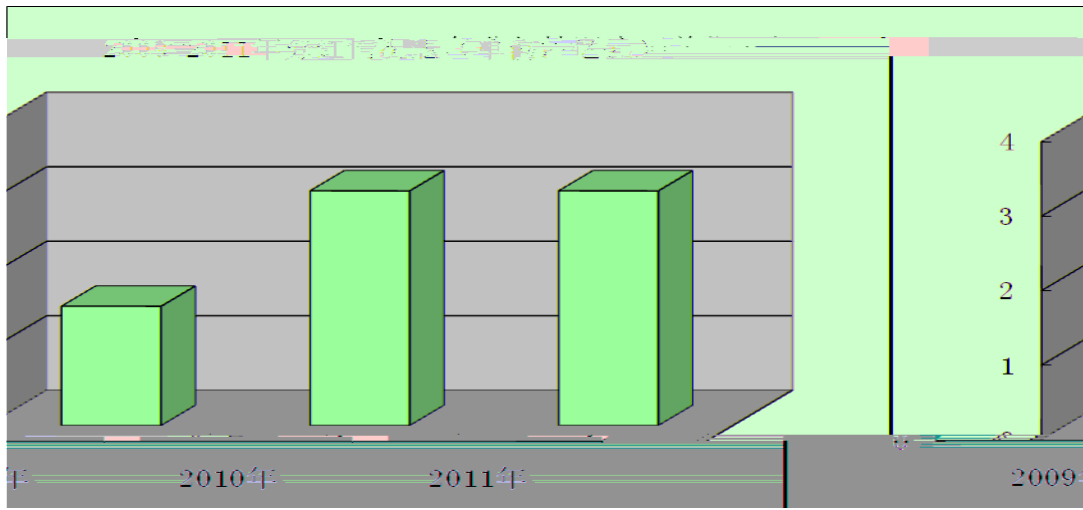
1



2



3



2

3

4

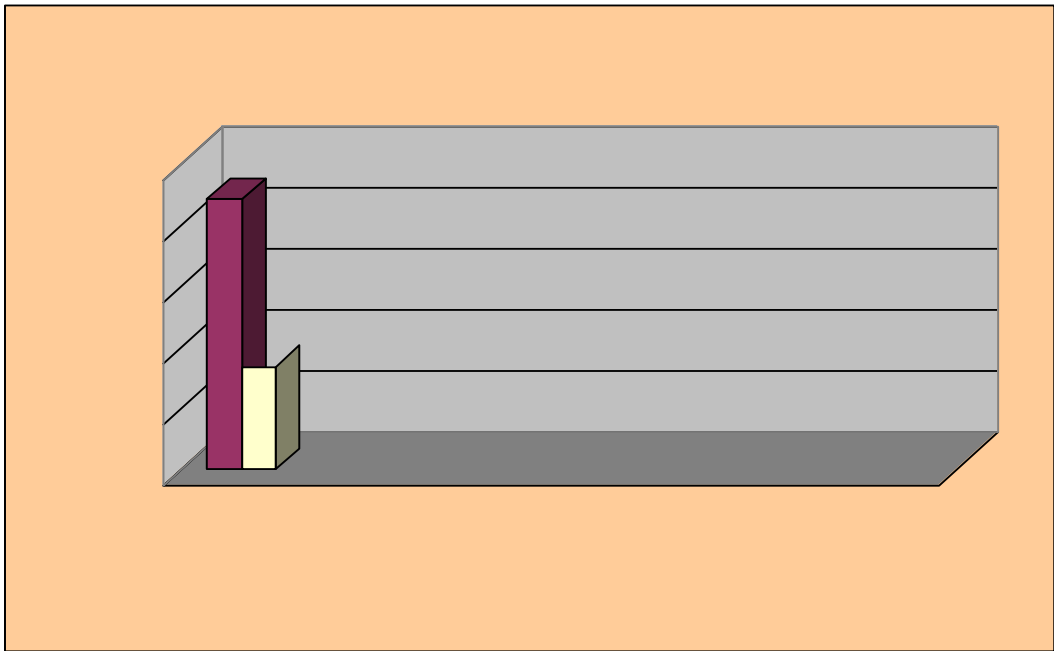
5

~~10E~~

1

2

“ ”



3

"

"

"

"

"

"

4

2012

25

"

3000

52

"

"

"

•

" "

•

"

2012

"

"

555

66.37

3045

111.56

2012

40.1

5

OA

2012 3 1

2012 4 17
80

“ ”



2012 7 18-20

65

6

2012 3 9

2012 5 4 -6

" — "

" "



" — "

5 28 -6 2

" "

5

2 3 4 5 8



2012 8

2



2012 11 27 -29

27 54

"

"

1

"

"

2012

2012 1.6
2

2012

[2012]1

10 20



2012

1327.2

1

201

60

— —

"

"

"

"

3

4

1

2

		"	"	2012	
	26				84
					2012
				102,920	25,100
	6045	3,000	352.58		27.7

3

2012

1305

140

133

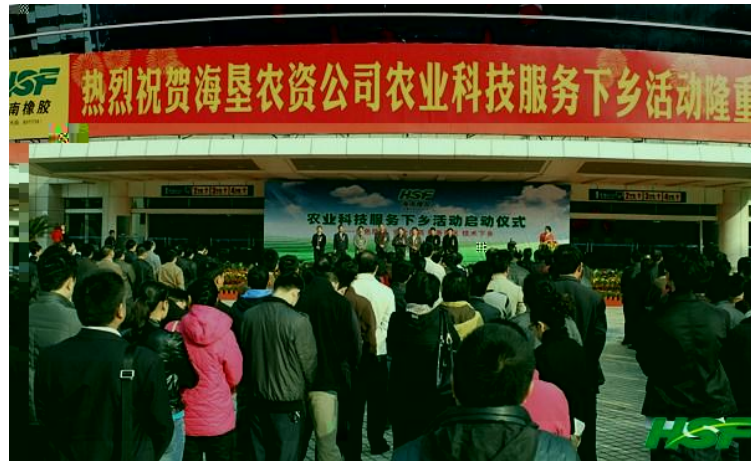
31,627

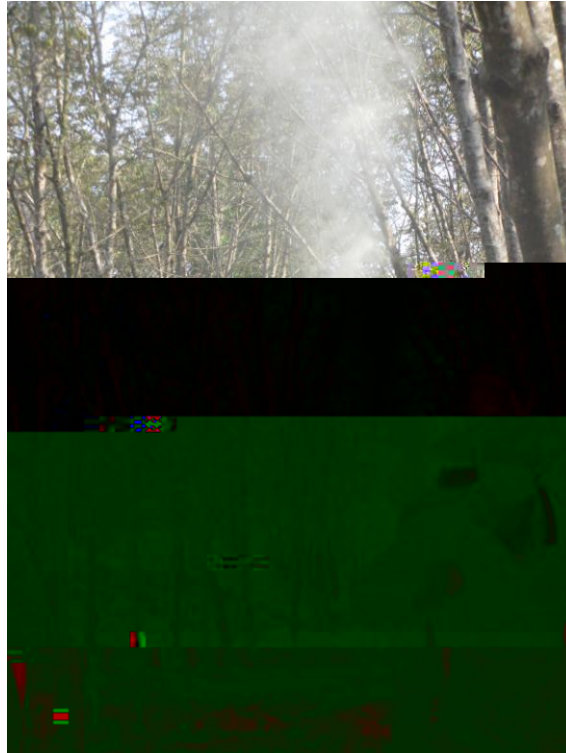
758

4

" "

"





4

2,000

2012

5

2012

97.67

102.31

" "

2012

"

"

2013

1

2013

2012

" "

2

2013

2012

3

4

5